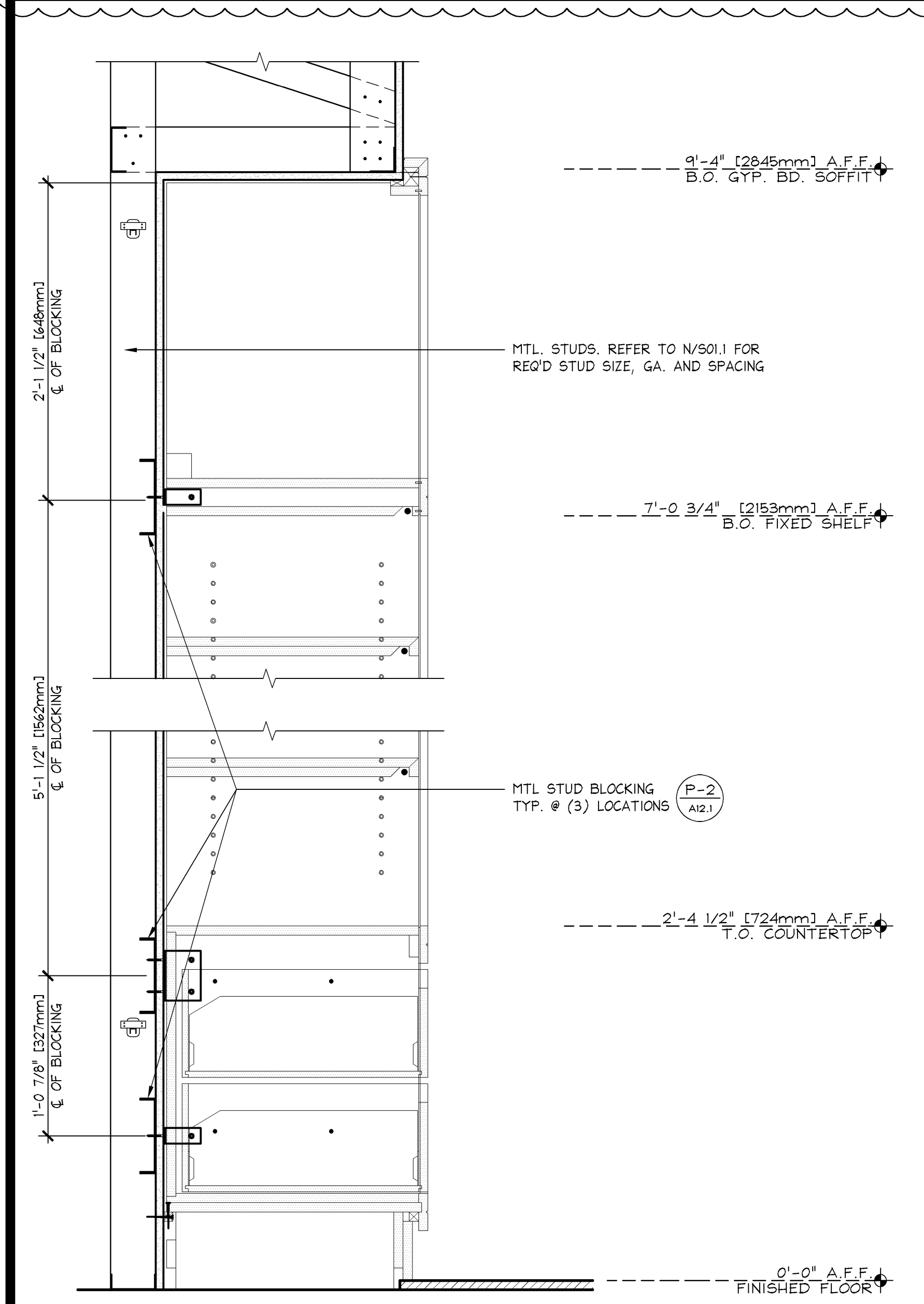


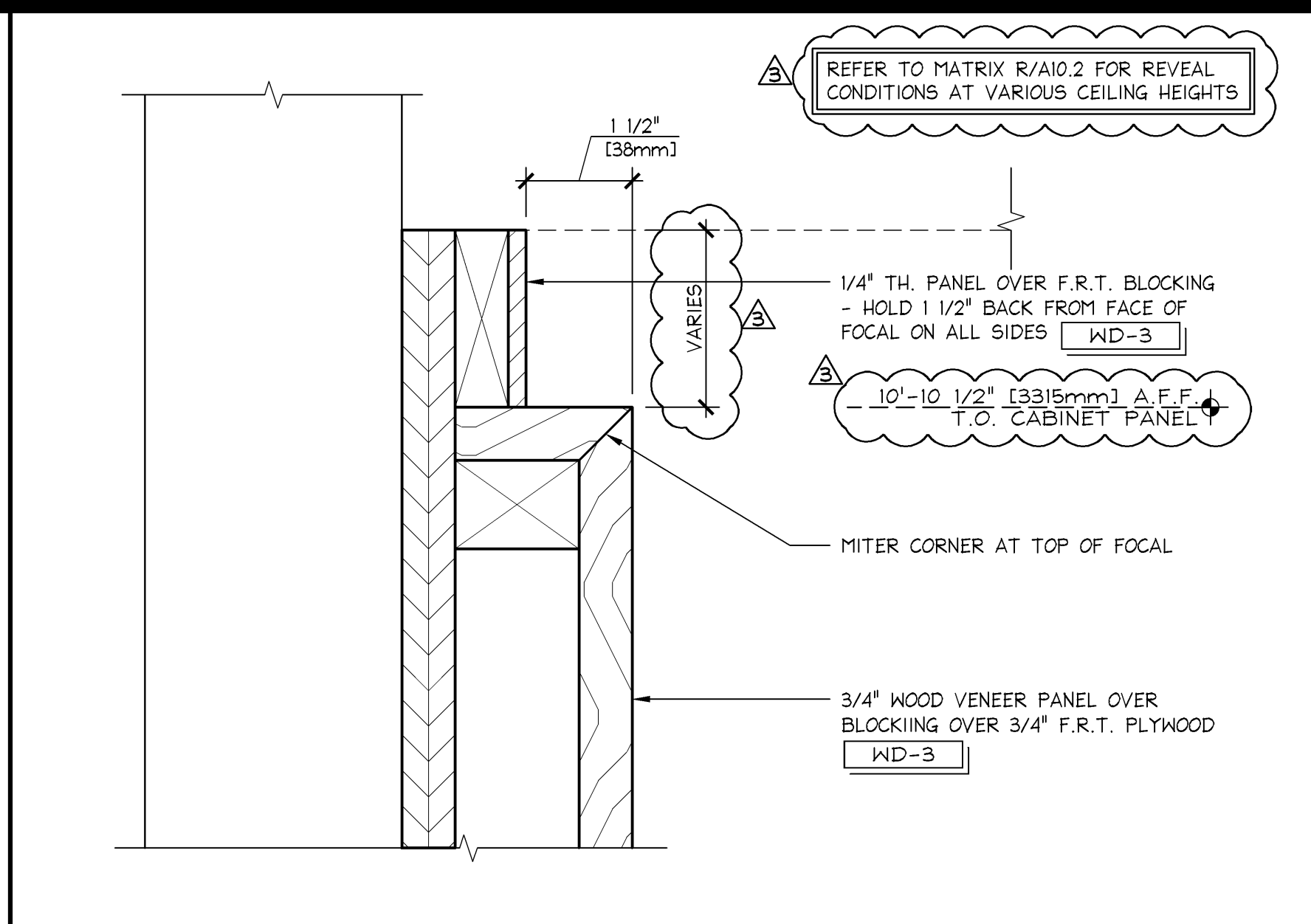
**ISOMETRIC @ TOP CORNER**

CEILING HEIGHT	DESCRIPTION	DETAIL
CEILINGS ≥ 11'-2" A.F.F.	NO WD-3 FILLER REVEAL, GINGHAM WALL COVERING ABOVE TOP OF PANEL	5/8" GYP. BD. OVER METAL STUD FRAMING [WC-1] T.O. PANEL
CEILINGS BETWEEN 10'-11 1/4" & 11'-2"	REFER TO DETAIL D/A10.5 WITH WD-3 FILLER PIECE (HEIGHT OF FILLER WILL VARY)	1/4" WOOD VENEER OVER BLOCKING [WD-3] T.O. PANEL
CEILINGS ≤ 10'-11 1/4" A.F.F.	ARCHITECT TO CONSULT L.S.D.M.C. DESIGNER FOR PASS-THRU PORTAL, FOCAL AND UNIT 5C MODIFICATIONS.	DETAIL T.B.D.

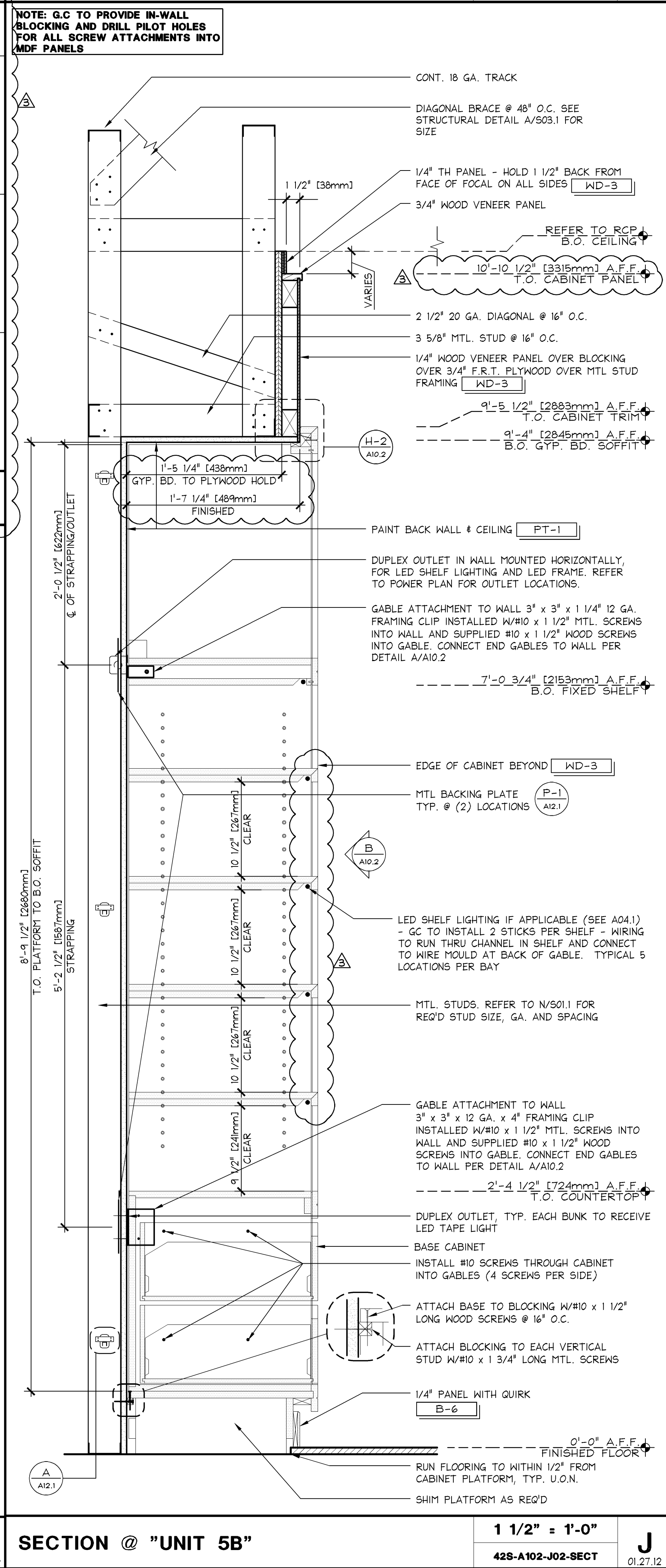
**PASS-THRU PORTAL, CONCIERGE AND UNIT 5B/5C REVEAL MATRIX**



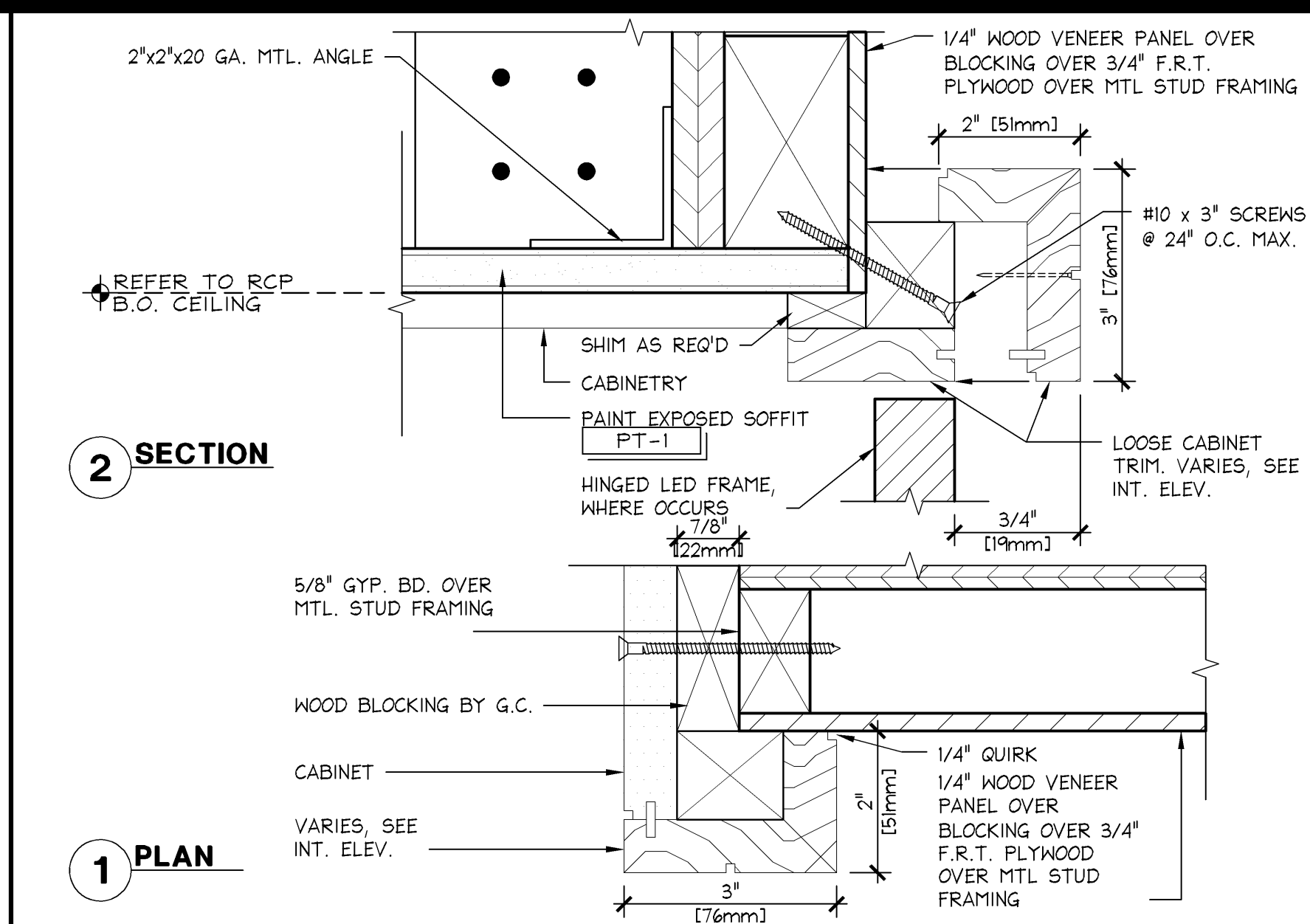
**"UNIT 5" SEISMIC ADDITIONS (HIGH SEISMIC DESIGN CAT D, E & F)**



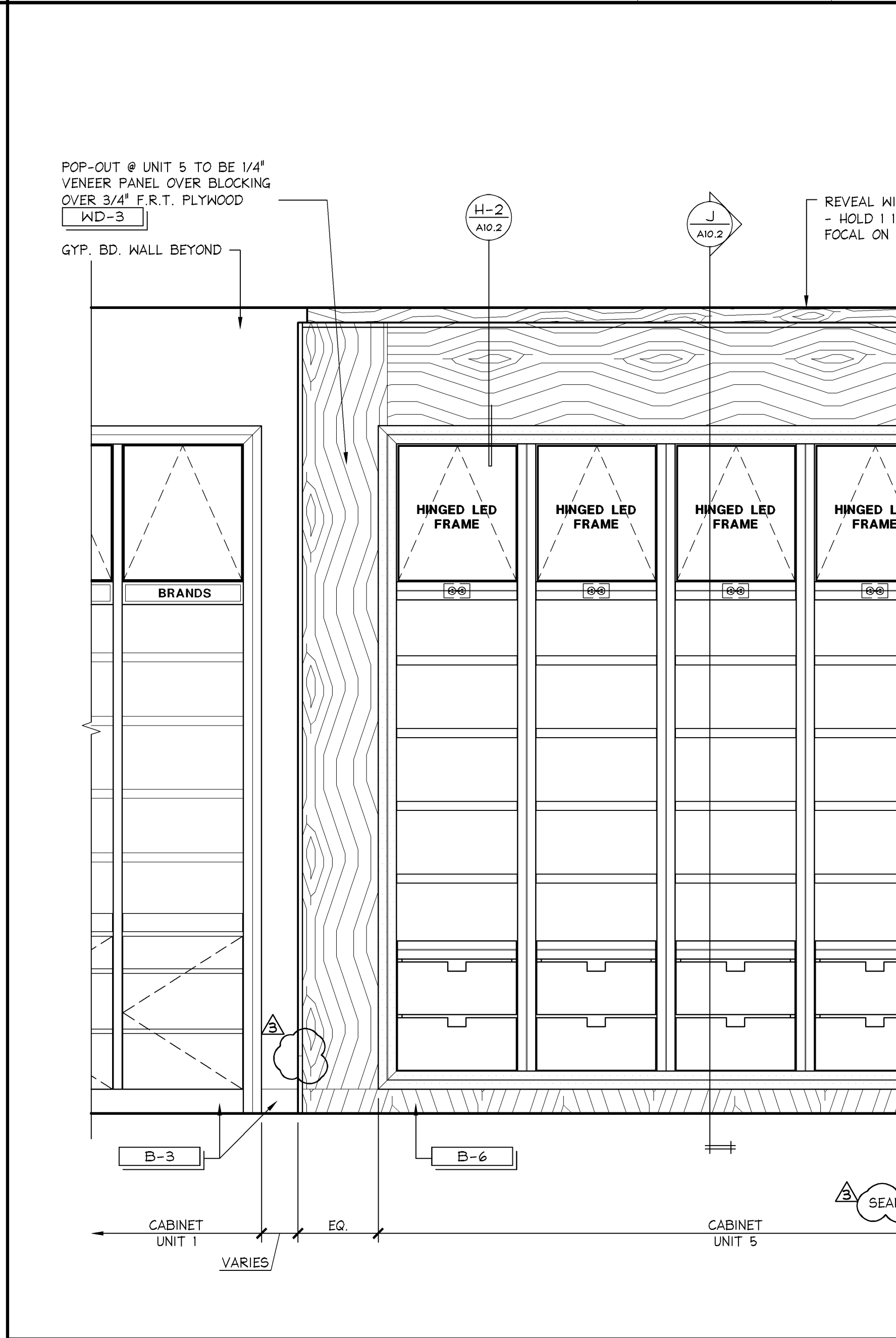
**HEAD DETAIL @ SIDE**



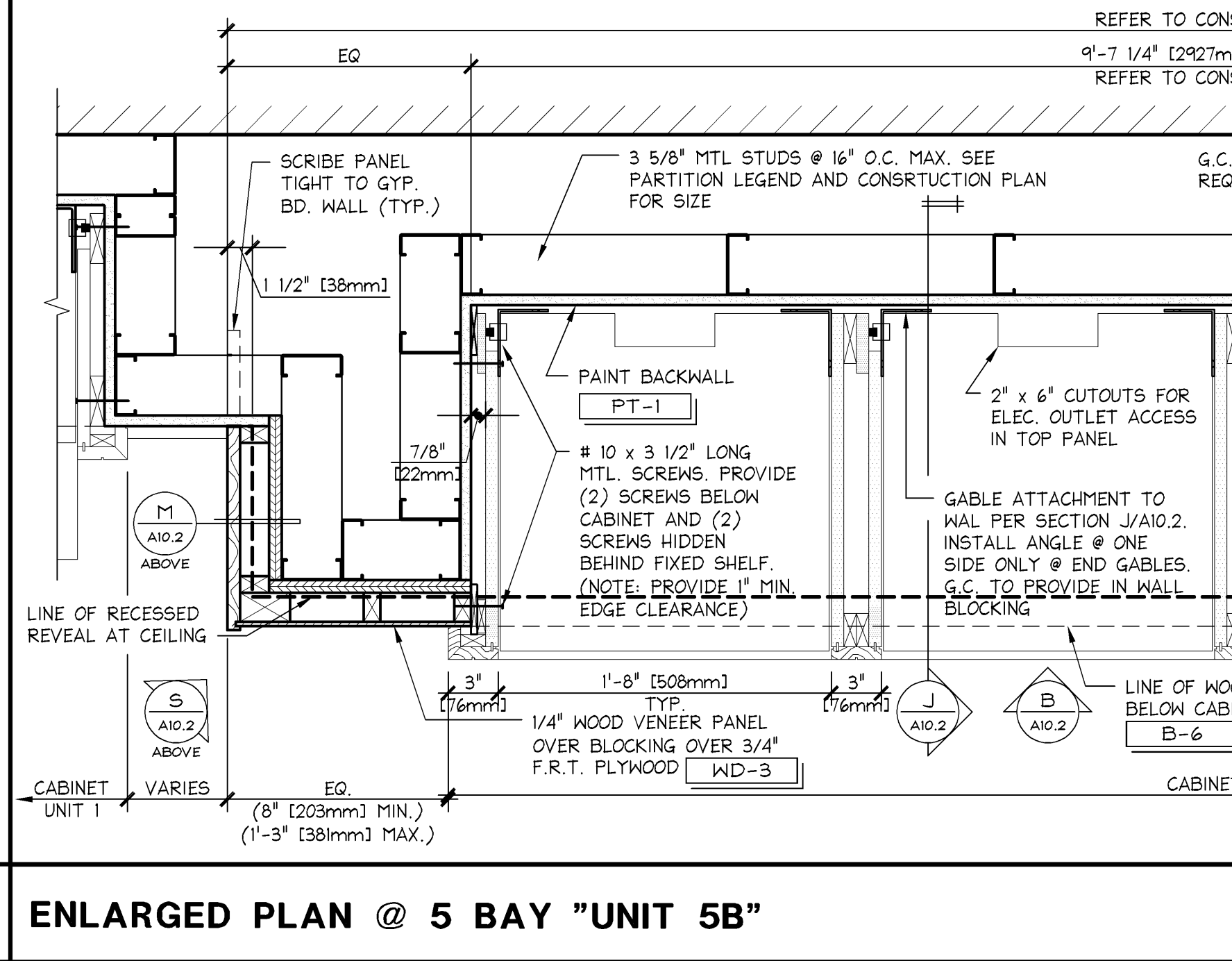
**SECTION @ "UNIT 5B"**



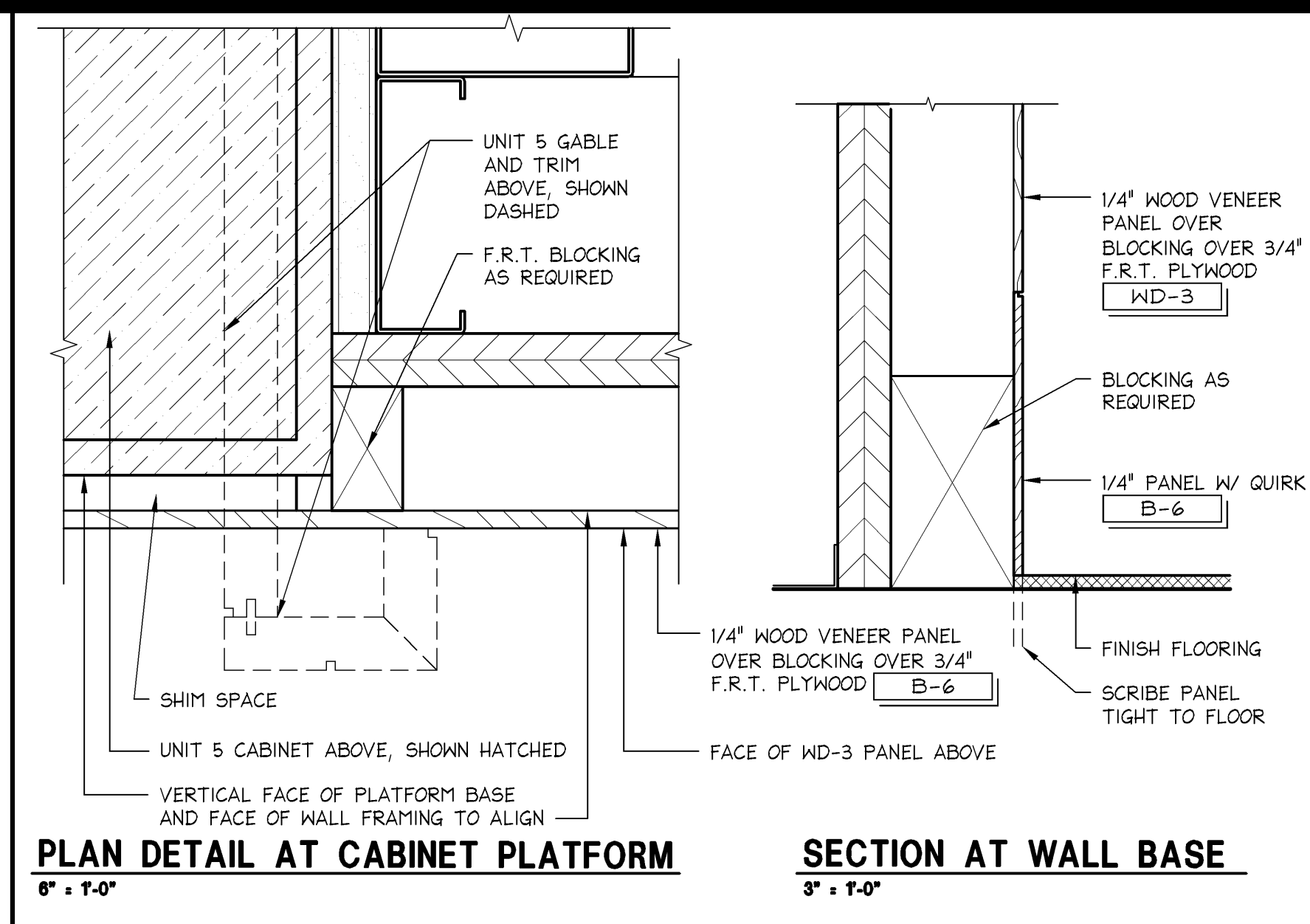
**"UNIT 5B / 5C" TRIM DETAILS**



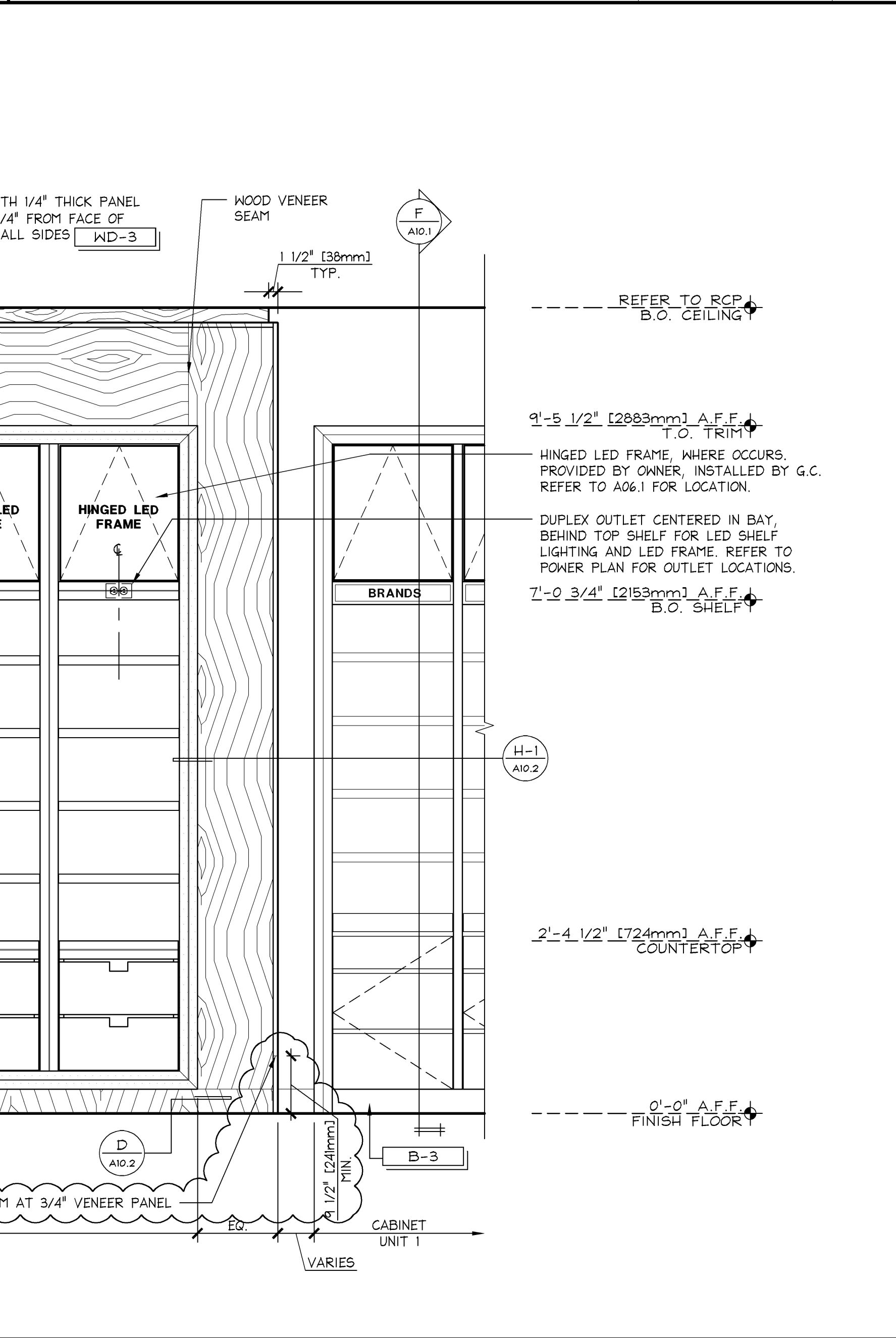
**ELEVATION @ 5 BAY "UNIT 5B"**



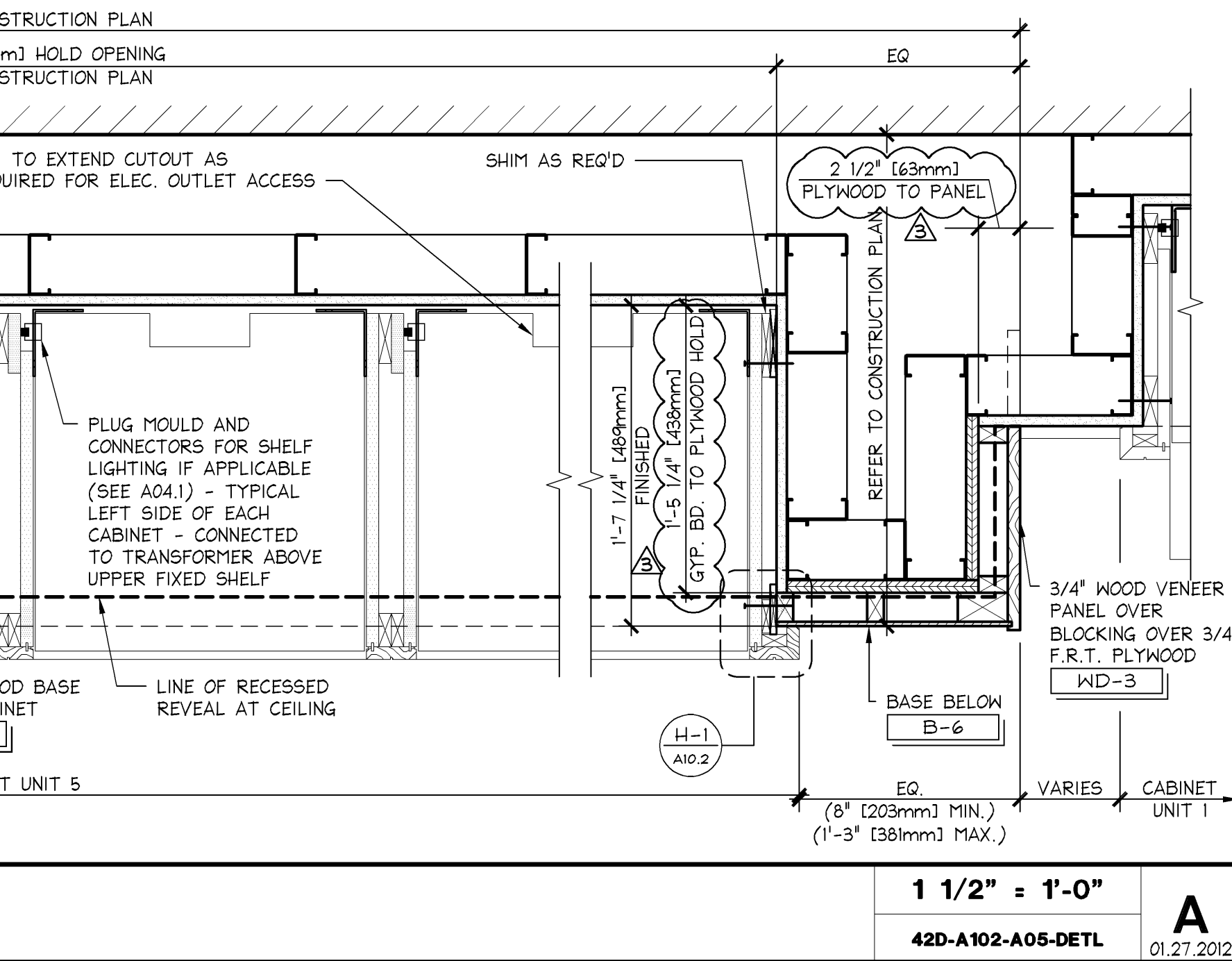
**ENLARGED PLAN @ 5 BAY "UNIT 5B"**



**BASE DETAIL @ "UNIT 5B / 5C"**



**ELEVATION @ 5 BAY "UNIT 5B"**



**ENLARGED PLAN @ 5 BAY "UNIT 5B"**

Shremshock Architects, Inc.  
6130 S. Sunbury Rd., Westerville, OH 43081  
t: 614 545 4550 | f: 614 545 4555 | shremshock.com  
Gerald S. Shremshock, Architect  
Timothy J. Shremshock, Architect

**limitedbrands**

LIMITED STORE PLANNING, INC.  
d/b/a STORE DESIGN & CONSTRUCTION  
Three Limited Parkway • Columbus, Ohio 43230  
Telephone: 614.415.7000 • Fax: 614.415.7349

24200161

**BATH & BODY WORKS**

**THE GALLERIA II**

SPACE NOT BEING USED  
1500 WESTHEIMER RD.  
HOUSTON, TX 77056

PROJECT INFORMATION:

REQUIRED BY: BUILDING DEPARTMENT COMMENTS: 04/11/14

DESIGN CHANGES/ LANDLORD COMMENTS/ MASTERS UPDATES: 05/28/14

ELITE CONSTRUCTION GROUP  
LAKE JACKSON, TX  
PHONE: 979.385.4073  
NOTE: THESE PRINTS HAVE BEEN REDUCED BY 50 PERCENT SCALE. WILL BE 50 PERCENT OF WHAT IS NOTED ON PLANS.

DATE ISSUED: 3/7/14  
DESIGNED BY: SB  
DRAWN BY: JLH  
CHECKED BY: RHW

**PERIMETER CABINETRY DETAILS**

DRAWING NUMBER: A10.2